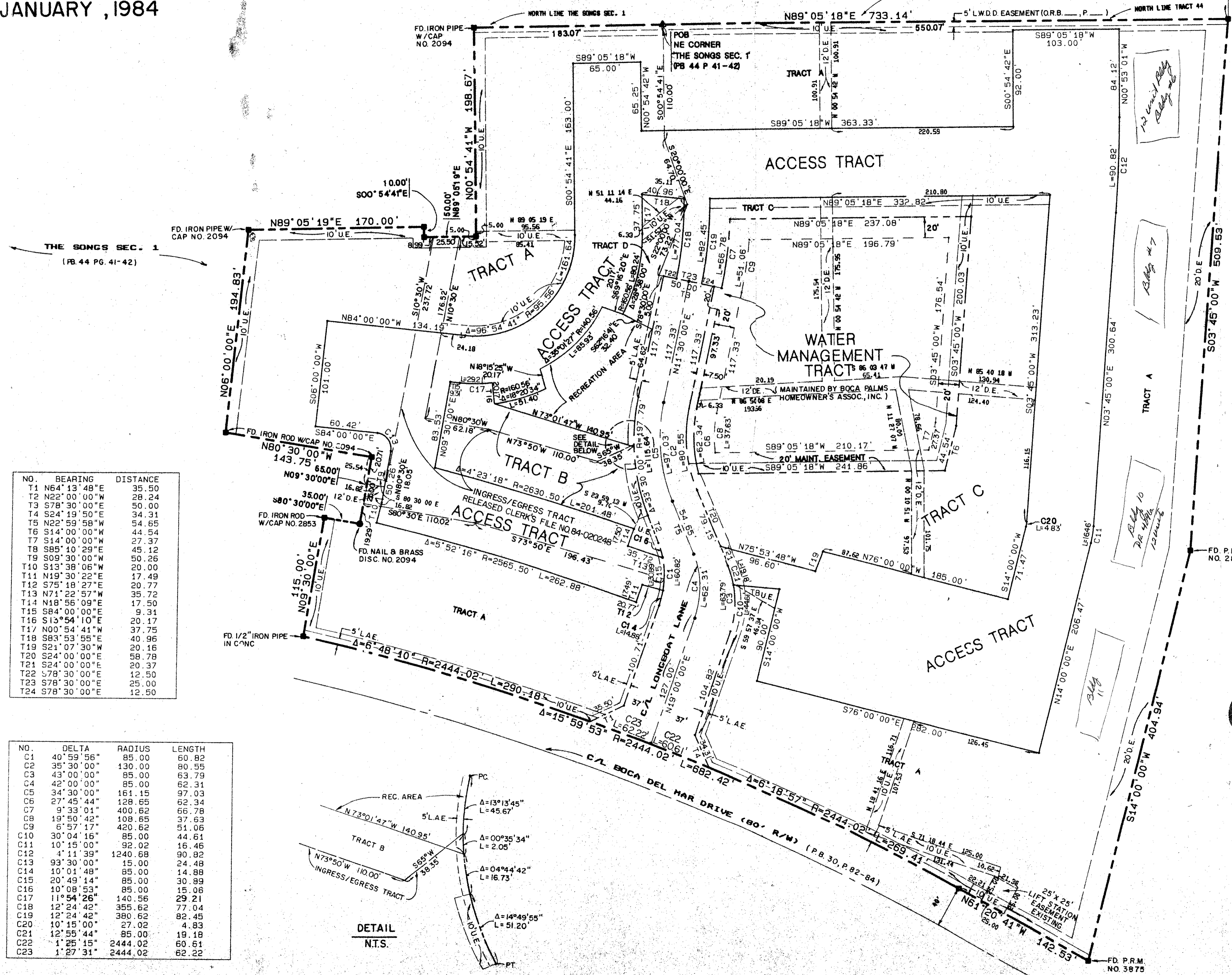
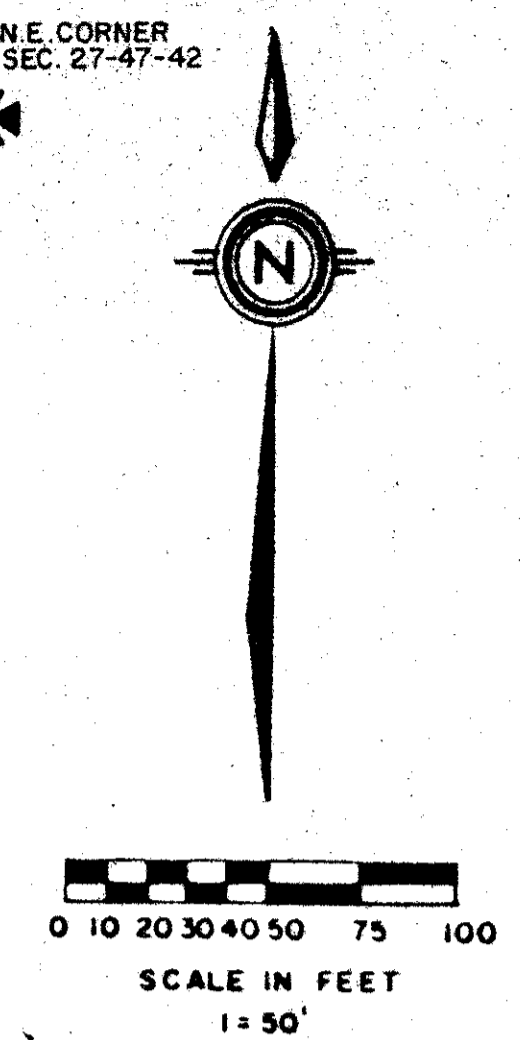


47/72

# BOCA PALMS

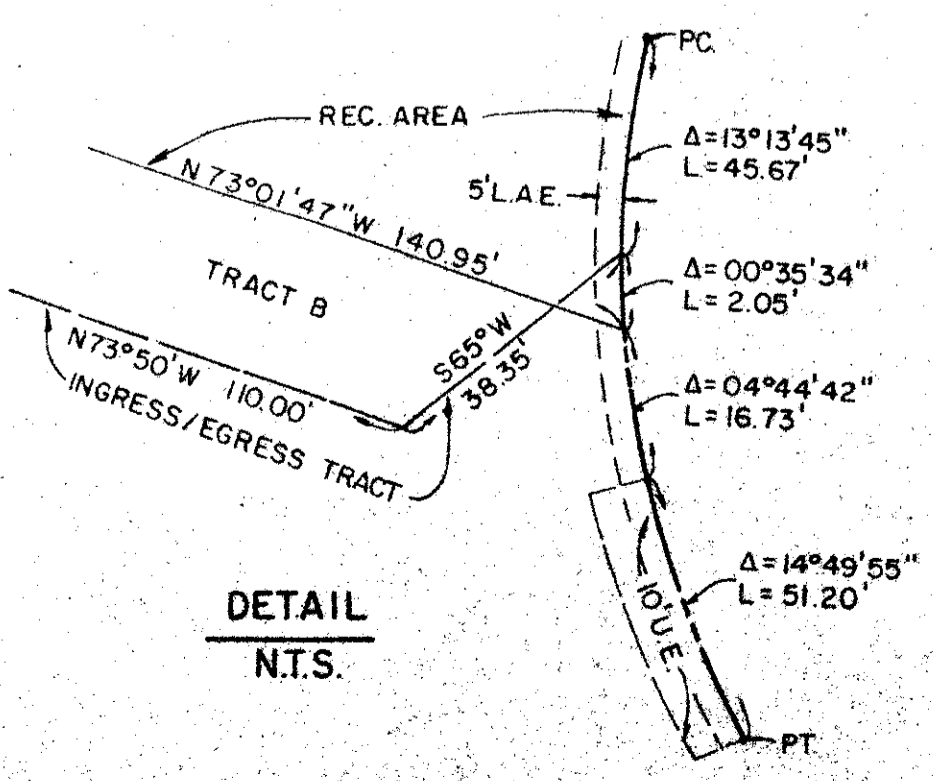
A PART OF BOCA DEL MAR, A P.U.D.  
 SITUATE IN SECTION 27, TOWNSHIP 47 SOUTH, RANGE 42 EAST, PALM BEACH COUNTY,  
 FLORIDA, BEING A REPLAT OF A PORTION OF TRACT 44 OF BOCA DEL MAR NO. 3 AND A  
 FORTION OF THE SONGS SECTION 1 (PB 30, P 82-84 AND PB 44, P41-42, RESPECTIVELY).  
 JANUARY, 1984

STATE OF FLORIDA  
 COUNTY OF PALM BEACH  
 THIS PLAT WAS FILED FOR  
 RECORD AT  
 THIS \_\_\_\_\_ DAY OF  
 AD, 1984 AND DULY RECORDED  
 IN PLAT BOOK \_\_\_\_\_ ON PAGES  
 AND \_\_\_\_\_  
 JOHN B. DUNKLE, CLERK  
 CIRCUIT COURT  
 BY: \_\_\_\_\_, D.C.



NO.	BEARING	DISTANCE
T1	N64°13'48"E	35.50
T2	N22°00'00"W	28.24
T3	S78°30'00"E	50.00
T4	S24°19'50"E	34.31
T5	N22°59'58"W	54.65
T6	S14°00'00"W	44.54
T7	S14°00'00"W	27.37
T8	S85°10'29"E	45.12
T9	S09°30'00"W	50.26
T10	S13°38'06"W	20.00
T11	N19°30'22"E	17.49
T12	S75°18'27"E	20.77
T13	N71°22'57"W	35.72
T14	N18°56'09"E	17.50
T15	S84°00'00"E	9.31
T16	S15°54'10"E	20.17
T17	N00°54'41"W	37.75
T18	S83°53'55"E	40.96
T19	S21°07'30"W	20.16
T20	S24°00'00"E	58.78
T21	S24°00'00"E	20.37
T22	S78°30'00"E	12.50
T23	S78°30'00"E	25.00
T24	S78°30'00"E	12.50

NO.	DELTA	RADIUS	LENGTH
C1	40°59'56"	85.00	60.82
C2	35°30'00"	130.00	80.55
C3	43°00'00"	85.00	63.79
C4	42°00'00"	85.00	62.31
C5	34°30'00"	161.15	97.03
C6	27°45'44"	128.65	62.34
C7	9°33'01"	400.62	66.78
C8	19°50'42"	108.65	37.63
C9	6°57'17"	420.62	51.06
C10	30°04'16"	85.00	44.61
C11	10°15'00"	92.02	16.46
C12	4°11'39"	1240.68	90.92
C13	93°30'00"	15.00	24.48
C14	10°01'48"	85.00	14.88
C15	20°49'14"	85.00	30.89
C16	10°08'53"	85.00	15.06
C17	11°54'26"	140.56	29.21
C18	12°24'42"	355.62	77.04
C19	12°24'42"	380.62	82.45
C20	10°15'00"	27.02	4.83
C21	12°55'44"	85.00	19.18
C22	1°25'15"	2444.02	60.61
C23	1°27'31"	2444.02	62.22



TRACT 44 BOCA DEL MAR NO. 3  
 (PB 30, P 82-84)  
 BOCA COLONY - BOCA PLACE  
 (PB 46, P 15-16)

0205-303

47/72

P.U.D. TABULAR DATA

SITE AREA

P.U.D. TABULAR DATA

SITE AREA	= 13.78 Ac.
UNITS	= 200 D.U.
GROSS DENSITY	= 14.5 D.U./Ac.
RESIDENTIAL USE	= 100
BUILDING AREA	= 1.89 Ac. 13.7%
WATER BODIES	= 1.22 Ac. 8.9%
STREETS & UNCOVERED PARKING	= 2.65 Ac. 19.2%
RECREATION AREA	= .22 Ac. 1.6%
OPEN SPACE (INCL. LAKES)	= 7.8 Ac. 56.6%
PARKING REQUIRED	= 400 Spaces
PARKING PROVIDED	= 400 Spaces

Meridian Surveying and mapping inc. WEST PALM BEACH, FLORIDA

DRAWN	MWN	DATE	10-05-83
CHECKED		SCALE	1"=50'
DRAWING NO.	83-3-046	BOCA PALMS	
SEC 27, TWP 47 S, RGE 42 E.			

SHEET 2 of 2